

Red Cross
Red Crescent
Climate Centre
support
to ICRC
Delegations



Identifying support needs



Is staff aware & equipped with knowledge about **climate risks & impacts on programming** in your context?

YES →

Has your delegation had a **climate screening** & does it currently have a **climate action plan**?

YES →

Does your delegation need **strategic** or **practical support** to **integrate climate risks into operations**?

See [Annex II](#) for more details on the Climate Centre's Help Desk to provide practical support.

We can offer support in identifying **priority areas for climate action**.

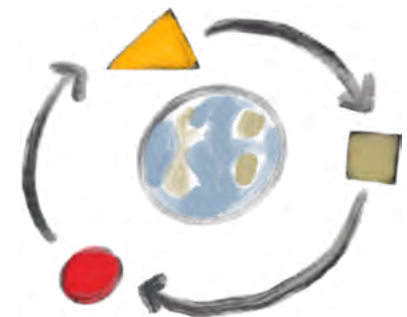
Our regional focal points & technical advisors provide **tailored guidance** & the Climate Centre's broader team of specialists & scientists can help design further **climate actions**. See [Page 3](#) for more info on how to get in touch.



NO

NO

Please request information to learn more about the screening process & climate action planning.



The Climate Centre facilitates **awareness sessions**, multiple day **trainings** and dedicated workshops – depending on the needs in the delegation.

Not sure where to start? The **knowledge survey** can help identify priorities.

See [Annex I](#) for more details on **capacity building support** by the Climate Centre.

Screening of your operations provides a **baseline of gaps, opportunities, and recommendations** to integrate **climate risks**.

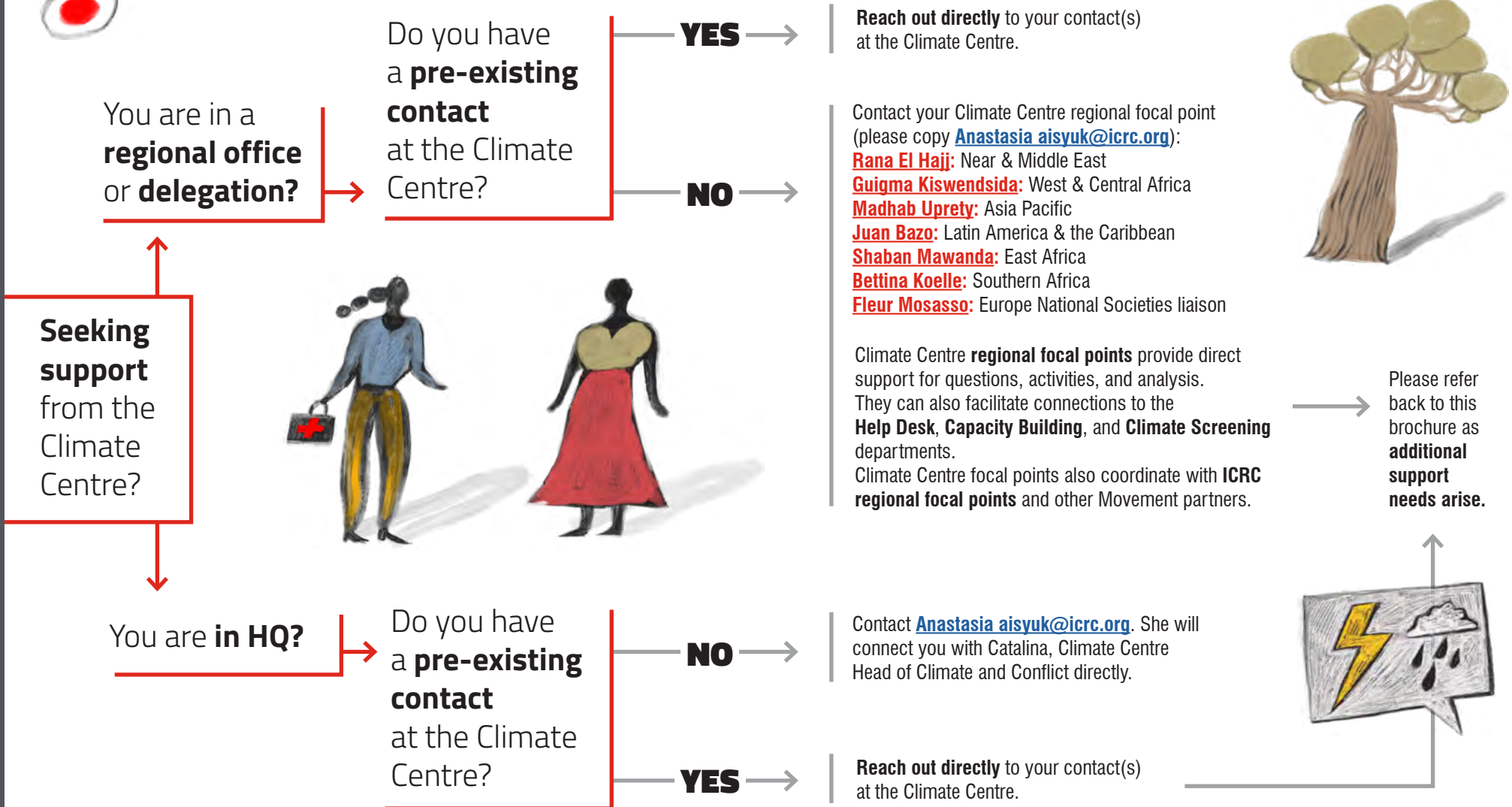
Screening also provides information on **ICRC-sector-specific climate impacts & climate projections**.

The **climate action plan** summarizes the next steps for the delegation.





How to get in touch with the Red Cross Red Crescent Climate Centre



Capacity Building:

Examples of activities under the Capacity Building pillar

Climate risk awareness session

Short session to explain “why are we working on climate change as ICRC” and “how are we integrating climate risk in our operations?”. This interactive and light session can be organized online or in-person.

Climate knowledge assessment survey

An online survey to assess the level of knowledge and available expertise in the delegation. The survey helps management identify capacity-strengthening needs and can be used to inform training curricula.

Transversal trainings

Trainings are designed to be interactive and participatory. The delegation and Climate Centre jointly select the relevant modules from a broad menu of options. Organized in-person for 2-3 days, or online spread out as sessions of several hours over a longer time period.

Core elements covered include the science of climate change, climate impacts at a global and local level, ICRC and/or global frameworks on climate ambitions, and guidance for climate-smart programs and operations – along with specific topics requested by the delegation. Discussions on delegation climate priorities, engagements with other actors in the context and more advanced technical modules on climate information use can also be incorporated.

Tailored technical training

Co-design and facilitation of thematic technical training on climate risk and solutions. Examples include trainings on using weather and climate information, anticipatory action, programme-specific climate adaptation decision-making and design.

Tailored workshops for management or technical staff

Examples include:
Facilitating strategic discussions in the delegation on climate risk integration priorities

- Application of climate risk information in programs and projects: “robustness testing” of projects to climate projections using simplified climate scenarios, to identify necessary adjustments
- Support for national roundtables between Movement partners and other humanitarian/government organizations for national strategy development and coordination

Support curriculum development for training/outreach of ICRC beneficiaries

Design programmes for training/outreach to specific beneficiary groups. For example, RCCC co-created a training with EcoSec for climate information use for farmers in Kenya.

Technical Support – Help Desk:

Examples of activities under the Help Desk pillar

Depending on the level of effort required, the Help Desk support is covered under the Climate and Environment Transition Fund, with no cost to the delegation. The level of effort will be discussed before support is provided.

Theme	Topic	Examples
Practice	Regional and delegation level strategy development	<p>Building on Climate Action plans developed through Climate Screenings to support the delegations and regional offices to develop their climate strategic planning (linked to ICRC Climate Framework).</p> <p>Collection and analysis of good climate adaptation practices for a given context, geographical area or thematic/metier.</p> <p>Support to integrate climate risks into departmental/sector strategies by providing climate risk analysis for the requested sector and advising on systematic integration into priorities and interventions.</p> <p>Support joint National Society and ICRC entry points to climate action planning.</p>
	Tool/process development	<p>Provide guidance and technical advise for the integration of climate risks into delegation and/or metier specific processes, tools and/or methodologies to complement global guidance.</p> <p>Development of tailored tools, methods and/or methodologies that support specific needs for a delegation and/or metier. For example, a checklist for field teams to integrate location specific climate information into assessments, or methods to engage stakeholders in discussions related to the intersection of ICRC activities and climate change in the context.</p> <p>Development or adaptation of cross-sectoral tools and methods, adapted to a particular context and thematic area.</p>
	Climate risk analysis	<p>Conduct specific climate risk analysis for delegations (metier specific or cross-sectoral). Including hazards, vulnerability and exposure analysis, including climate projections and disaster impact analysis. This analysis will create disaster risk scenarios to support delegations to determine current and future activity prioritization. The process can be tailored to delegation needs and can range from minimal to more robust, comprehensive support.</p>

Theme	Topic	Examples
Practice	Integration of climate and weather services into operations	Provide tailored information of available climate services for specific countries/subregions (what climate information is available for what variables (ie. rainfall/temperature), how reliable the services are and how useful it can be) – <i>climate refers here to long term climate.</i>
		Provide tailored weather information of available short to seasonal forecast for a given country/sub-region, for a specific variable/hazard (ie. rainfall, floods, storms, temperature, heatwaves, drought, etc.). This can include the type of forecast, service providers, false alarm ratios, etc.
		Monitor main global forecast models and keep regional offices informed about upcoming potential harmful forecasted hazards.
Research	Early Warning and Early Action (EWEA) application for ICRC operations	Conduct mapping of EWEA practices in a given context, lessons learned and potential relevance and applicability to ICRC delegations.
		Conduct Anticipatory Action (AA) feasibility studies for ICRC operations (can be connected with feasibility studies that the Climate Centre carries out to support National Societies).
		For example: climate and health studies (for specific climate hazards, regions or populations of concern), climate shock responsible social protection and applicability of social protection in a given ICRC context, climate impacts in detention, protection considerations for climate impacts in a context for the civilian population, nature based solutions, etc.
Policy	Engagement	Climate Centre experts can support ICRC events at the delegation, regional, or global level on events related to climate change. For example if involved in an event on IHL and climate change, Climate Centre experts can support the integration of a technical climate perspective.
		Review of national climate change and disaster risk reduction policies, strategies and practices to identify entry points for action for ICRC delegations. This can include an analysis of the 3Ws of who is doing what and where on climate action at the country level to identify opportunities for the delegation.
		Tailored briefings for ICRC staff on policy opportunities, challenges and recommendations for specific countries, contexts and thematic areas (ie. water, integration with protection concerns, climate finance, etc.).
Innovative engagement	General	Identify climate finance policy and practice landscape in a given context. This includes actors, policies, initiatives and other relevant information required by a delegation.
		Policy stakeholder mapping of key actors to support the delegation in identifying entry points for positioning and influencing.
		Support facilitation of unconventional exchanges to support outreach for delegations. For examples, see this link .
Creative comms		